

# SAFETY PATH

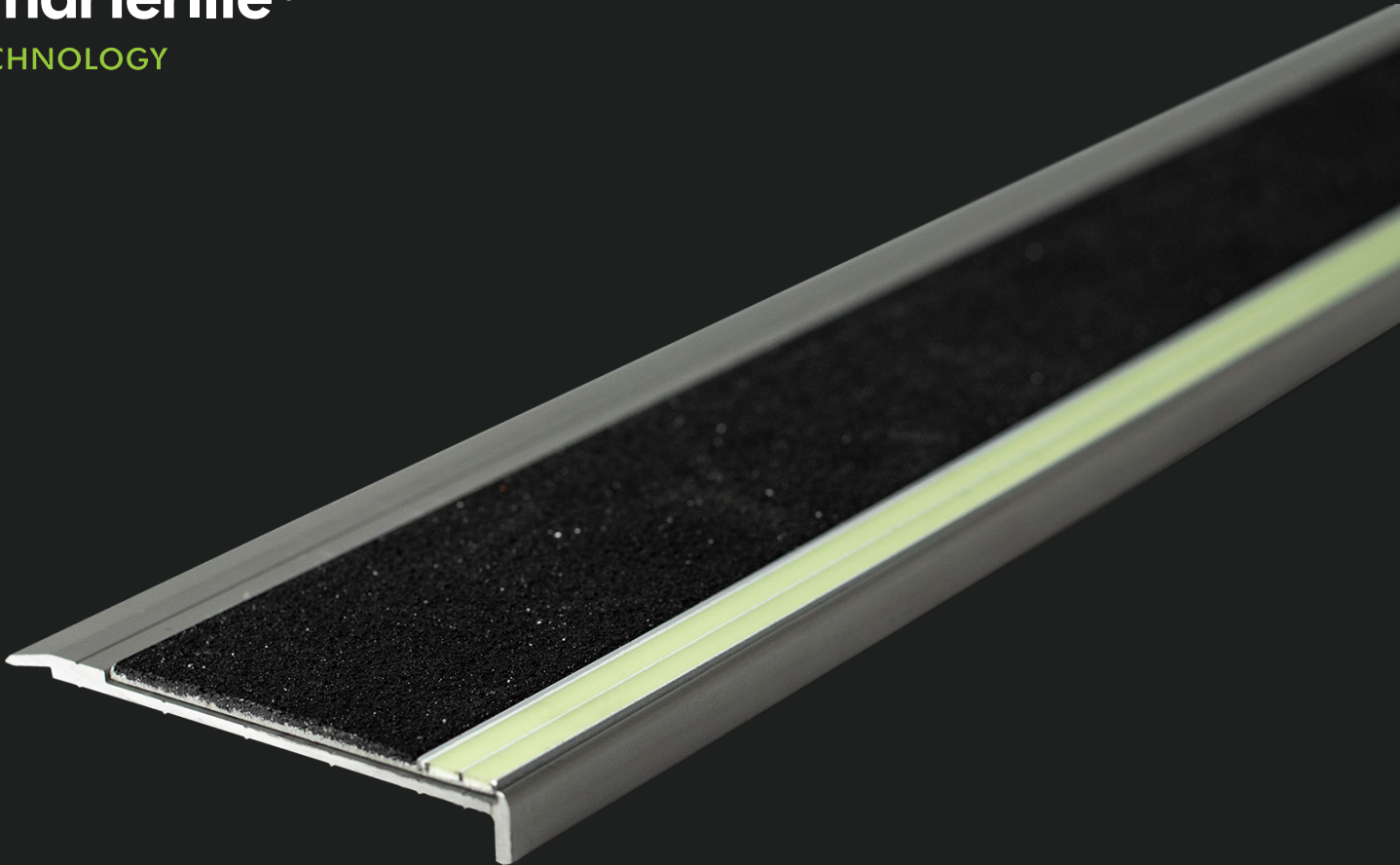
SAFETY PATH PL STAIR TREADS BROCHURE | V.1

---

Illuminated by

**Smarterlite**®

TECHNOLOGY



PHOTOLUMINESCENT

# STAIR TREADS & NOSING

Carbon Friendly Renewable Light

---

1300 244 569

info@smarterlite.com

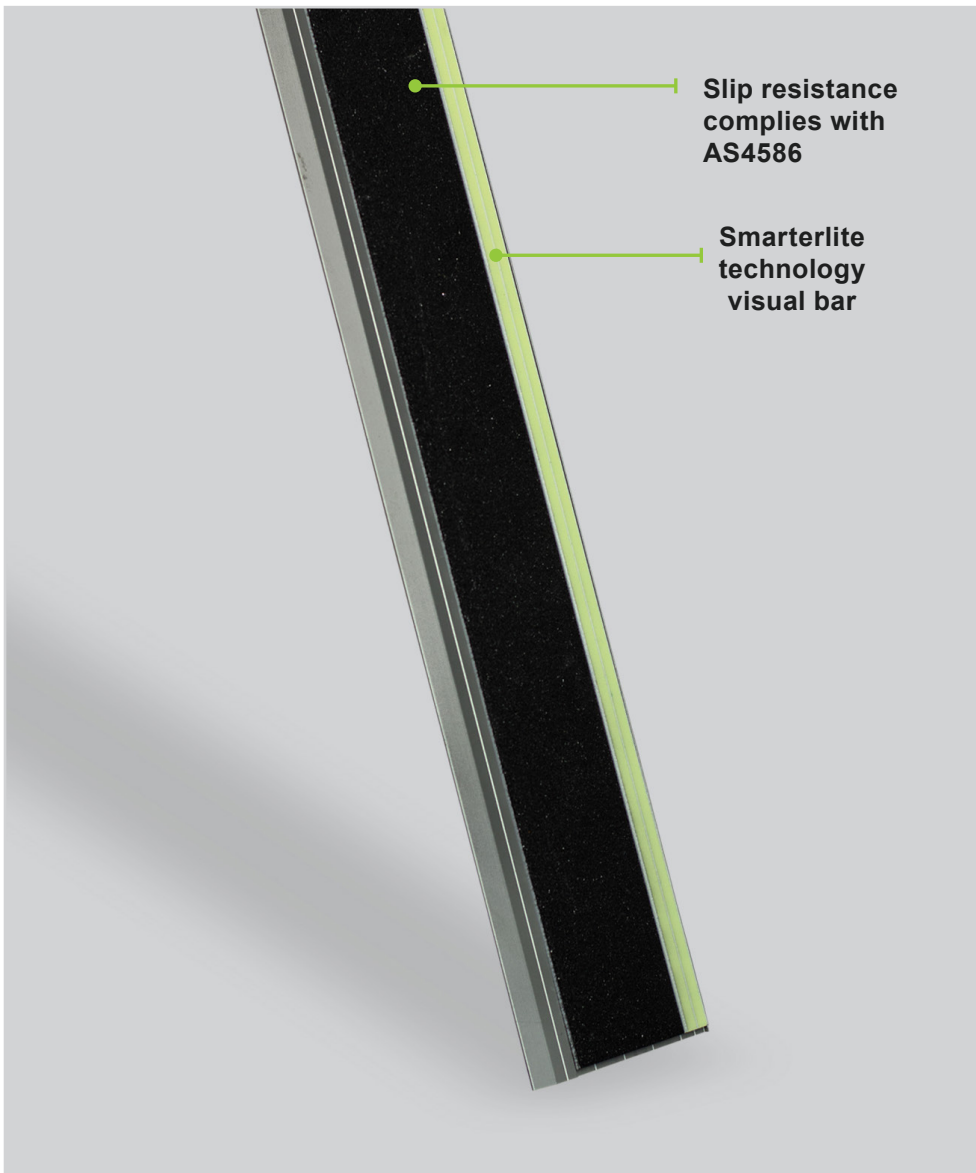
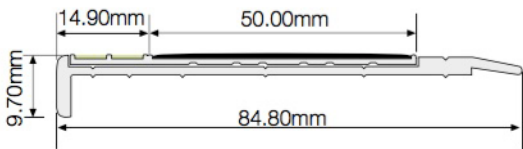
Level 5/15 Queen Street,  
Melbourne, VIC 3000

[www.smarterlite.com](http://www.smarterlite.com)

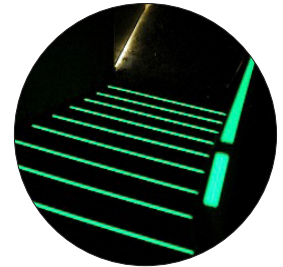
# PEDESTRIAN SAFETY IN THE DARK

Safety Path stair treads and nosing utilise a Smarterlite technology bar to improve visual contrast. The wide tread improves grip on stairways, promoting pedestrian and public safety in power failures, dark or low light conditions. Designed to be easily fitted to most new and existing stairways including timber, tiled, masonry and steel. Manufactured from strong extruded alloy base and fitted with slip-resistant material the stair treads remain effective even under heavy traffic.

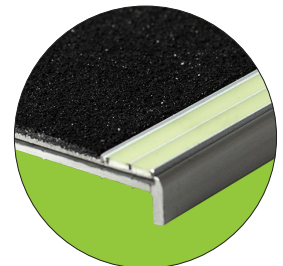
Suitable for both internal and external applications such as stairwells, emergency exits, entertainment facilities, sports venues and theaters.



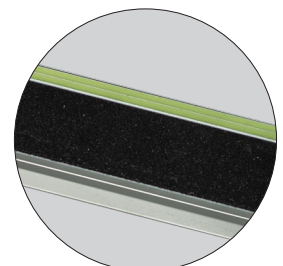
Smarterlite technology provides highest luminance standard Globally



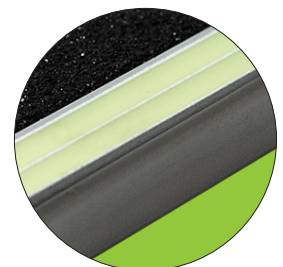
Custom lengths and sizes



Easy installation



Safety in the dark Slip-resistant and visual contrast



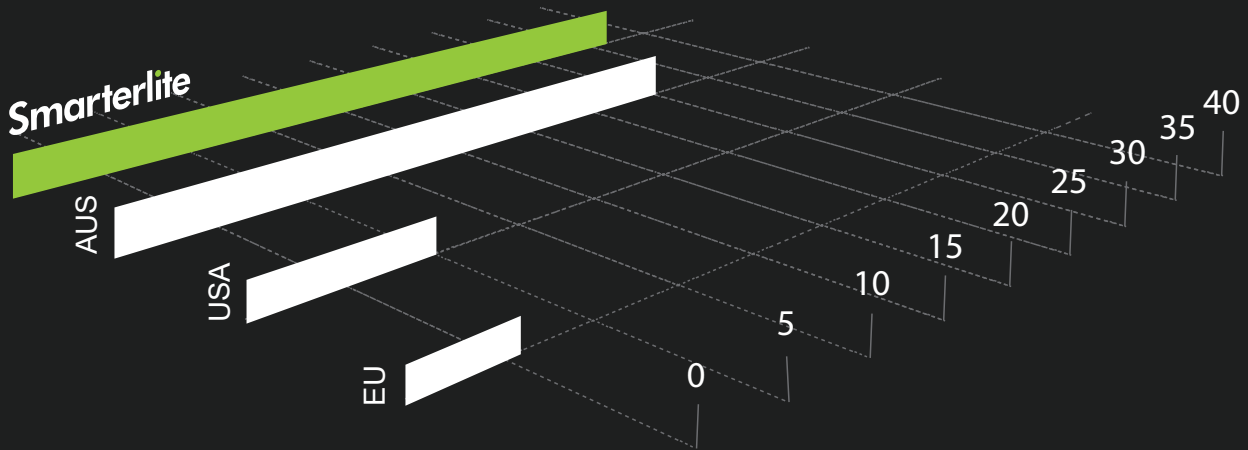
Washable with retail and commercial cleaning solutions

# WHY PHOTOLUMINESCENT STAIR TREADS & NOSING

Smarterlite provides sustainable photoluminescent and LED hybrid lighting solutions wherever safety and emergency lights and wayfinding are needed. We are so serious about our mission that we invented the world's most advanced photoluminescent material that powers our stair treads.

**Smarterlite technology exceeds highest standards globally.**

Photoluminescence developed to comply with National Construction Code.



**SmarterLite**  
36mcd/m<sup>2</sup> for 90 mins

**Australia**  
30mcd/m<sup>2</sup> for 90 mins

**USA**  
5mcd/m<sup>2</sup> for 90 mins

**Europe**  
2.8mcd/m<sup>2</sup> for 60 mins



**Life saving technology**



**Safety in the dark, reduce injury on site**



**Visible in night and low-light conditions**



**Environmentally Safe & Sustainable**



**Directly replace existing technology**



**Reduce slips and falls, complies with AS4586**